

# The Pennsylvania

601 Pennsylvania Ave NW Unit # 1101, Washington, DC 20004

**\$299,000**



©Copyright 2006 MRIS ©



## *Warm & inviting condo in highly sought after Penn Quarter.*

- This stylish studio on high floor located in the heart of it all.
- **Unit Features:** Open floor plan with, hardwood floors, washer/dryer, Murphy bed, flat screen TV and loads of closet space.
- **Building Features:** 24/7 front desk, gym, party room, garage parking for rent.
- **Neighborhood Features:** Great shopping, dining and entertainment are just outside your door. Short walk to Metro.



For more information call

**Christopher Suranna – 202-505-0534**

**Or**

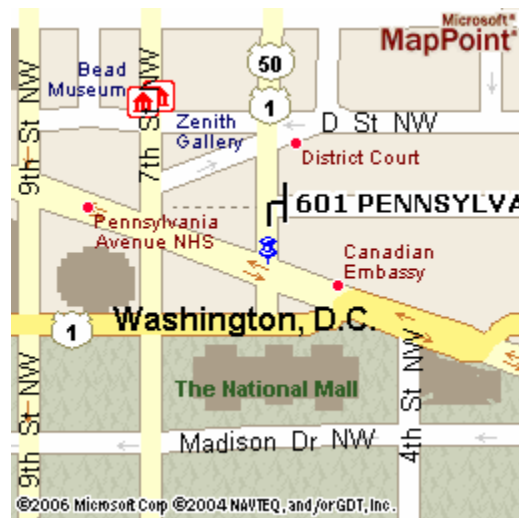
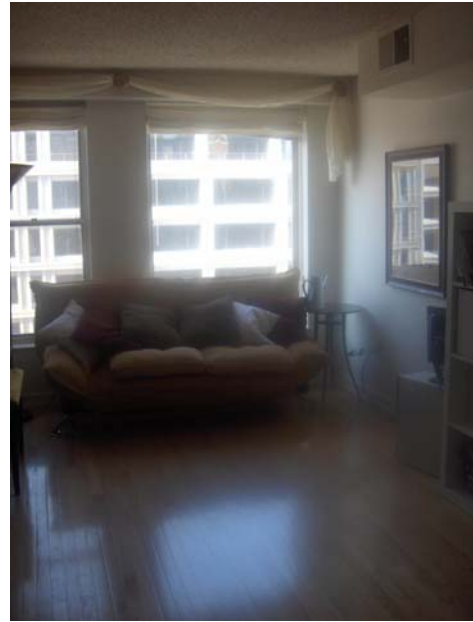
**Jim Lahey – 202-285-2800**

[www.metroDChouses.com](http://www.metroDChouses.com)

**RE/MAX Allegiance**

Each office independently owned & operated





#### **Additional Features/ Information:**

- Garage Parking Available for Rent, On Site 24/7 Desk, Gym and Add'l Storage.
- Total Taxes 2005 - \$2321
- Approximate Sq/Ft - 557
- Low Condo Fee of \$292.

*Information Deemed Reliable, but not guaranteed.*